

District 4 Spot



2011



DISTRICT 4 WEBSITE

WWW.DISTRICT4.INFO

Unit Websites

112 - acblunit112.org ♠ 120 - nepab.com

121 - unit121bridge.com ♥ 133 - lvbabridge.org

141 - philadelphiabridge.info ♦

168 - <http://web2.acbl.org/hosted/units/unit168/index.htm>

190 - unit190.org ♣ 217 - unit217.nepab.com



EDITOR

Elaine Landow
2556 Morris Road
Lansdale, PA 19446
215-699-6134
e-mail:
4spot@comcast.net

PRESIDENT

RICK ROWLAND

RICK.ROWLAND@VERIZON.NET

1ST VICE PRESIDENT

WALTER MITCHELL

2ND VICE PRESIDENT

TOM WEIK

SECRETARY

BILL BAUER

TREASURER

RICK ROWLAND

DISTRICT DIRECTOR

CRAIG ROBINSON

215-699-6134

BOD4@COMCAST.NET

All rights reserved. No part of this publication may be reproduced without permission of the editor.

PRESIDENT'S MESSAGE

RICK ROWLAND

The Syracuse regional gave me the opportunity to meet many new folks from the northern part of the district. Gerry Radway, Margie Spence and their committee put together a wonderful event.

The Valley Forge regional was smaller than we had hoped for, but has a great new venue. The Dolce Valley Forge and its staff were very accommodating. As Carole King once said, I felt the earth move under my feet. Tuesday's earthquake was a bit scary for those of us who had never experienced one before, but



the bridge went on. Continuing with the 70's music theme, Gloria Gaynor wrote "I will survive". Unfortunately, the tournament didn't survive Hurricane Irene. Out of an abundance of caution, the District 4 Board voted to cancel Saturday night and Sunday bridge sessions based on information available at the time.

I look forward to seeing you all in Lancaster.

CHANGES

With online publication comes some welcome changes to our publication: 1) Space is no longer an issue; 2) Flyers from each of our tournaments are included at the end of the issue - see the index on the last page; and 3) deadlines are shortened - next issue (December) submissions will be due November 11.



DISTRICT DIRECTOR'S REPORT

CRAIG ROBINSON

"There aren't many times in one's life when an opportunity presents itself at the right time that is also the perfect fit. I believe my strategic planning and operations experience in both the for-profit and non-profit sectors combined with my strong marketing background can propel the ACBL to the next level." So wrote Robert Hartman in his cover letter to the ACBL Search Committee.

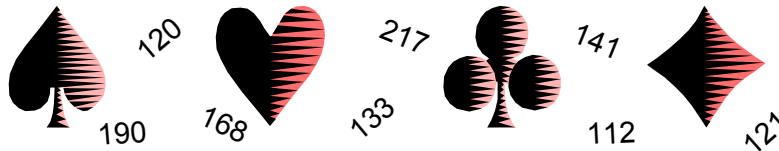
The Committee, Bruce Blakely, Chair, Sharon Anderson, Rand Pinsky, Joan Gerard, Dan Morse, consultants Bob Blanchard and Steve Beatty and me, sifted through over 80 applications, had telephone interviews with about half and face-to-face interviews with twelve and in the end Robert Hartman stood alone.

He is young (however, more and more people appear young to me) based on the fact that he graduated from the University of Arizona in 1992. He also has an MBA from Southern California. He has worked as Associate Athletic Director at the University of California, Berkeley and most recently as General Manager and Vice President of Golden Gate Fields (race track). He has been a member of the ACBL for ~25 years and is a life master. He is very strong in marketing, finance, and information technology. He also has a great way with people and he is smart. I wish him luck and offer him my support.

Jay Baum has been CEO since the beginning of 2002. He informed us that he would like to retire June 30th 2012. We have now fulfilled that request. Jay has been a great public relations image for the ACBL, but he has done far more than that. The organization is in great financial shape, over six million in the bank and debt free. We own our beautiful new building in Horn Lake and our membership has grown about 10% under Jay's leadership to about 165,000 members.

Jay is a great guy and we owe him our thanks for all he has done in his term as CEO. He will continue on as a consultant until his requested termination date.

From The Four Corners



CENTRAL NEW YORK 112

Walt Gable

315-568-2538

wgable@rochester.rr.com

I am writing this article after just returning from the Burt Garrell District 4 Regional in Liverpool, NY. Like your “typical” regional, there were lots of players overjoyed with making Life Master. I was especially thrilled for John Noronha for two reasons. I was part of a team with him at a sectional a couple years ago when he was so excited to get some silver points. More importantly, John is one of the most wonderfully polite and kind bridge players you could ever hope to meet. That night at hospitality I gladly congratulated him and told him that he could savor his new status far more than I could the night I made Life Master (because I had a brother who had been airlifted with cardiac arrest).

It was also great fun to talk with the many players who made their way from their home towns

in Canada to play at our regional. It certainly seems that the largest group of players at the Liverpool regional, other than our own Unit 112 players, were our great neighbors north of the border. So many of them are good players. Even more importantly, by and large they are fine people. Several made it clear to me that they like to come to our Liverpool regional.

Probably a main reason why they like to come to our regional is that we have so many dedicated unit members who work so hard to put our regional together. I can hardly begin to say enough good things for the efforts of Gerry Radway, the tournament Business Manager and Tournament Chair, and her co-chair Margie Spence. Even though they had to make some decisions because of financial constraints, they still did a super job in creating an enjoyable regional for so many players. As I know them well, I know that they would emphasize the hard work of the various committee

chairs. So, let me simply, on behalf of Unit 112, extend my kudos of thanks also to them.



NORTHEASTERN PA 120

Walter Mitchell

570-709-0850

waltermitc@aol.com

Our unit held its annual membership meeting July 31st in Stroudsburg, and welcomed Kathy Mateyak and Susan Solomon as new board members. George Marcy was recognized for his more than 10 years of service as Unit website manager, and certificates of appreciation were given to Judy Argento, Fay Pacchioli and Beth Rosenthal for their long-time board service. Accolades to Bill Haynes and Kate Shumaker for arranging a great event: two sessions of bridge around a bountiful buffet dinner. We look forward to a similar succulent event at the Architzel bridge party in Beach Lake, hosted by Fay Pacchioli on September 11th.

Our final sectional for 2011 will be held at the Kingston Firehouse September 30, Oct 1 & 2. The Unit will also host a Flight "C" North American Pairs contest, tentatively set for 11 a.m. October 22nd at the Timbers Buffet at Mohegan Sun Casino in

Plains Township. For details, contact Walter Mitchell at 709-0850. Remember, participants must have pre-qualified at the club level in June, July or August.

Question of the quarter: what's more fun, a laydown slam or a challenging 3h bid with a Moysian trump fit? Submit your response to me and we'll report the results of our totally unscientific survey next time.

Remember, if you feel you HAVE to criticize your partner, PLEASE do so privately. And before doing so, stop to think if you have ever been subjected to partner criticism and how you felt.



BERKS MONTGOMERY 121

Sue Wessner

610-972-5327

bridgebysue@comcast.net

Unit #121 is pleased to announce that our Fall Sectional, September 23-25, will be moved to a new location - **THE INN AT READING, 1040 N. Park Road, Wyomissing, Pa. 19610**. The Inn is conveniently located with great parking. Food will be offered during sessions. Discounted room rates are also available. No food is permitted to be brought in.

The Annual Hawley Quier Unit game will be played on October

30, 2011, at 1:00pm. This will be a mixed pairs event. Sign-up in the Bridge Room.

The Unit's Annual Meeting will be held on November 13, 2011, at Riveredge, Route #183, Reading. Dinner-meeting at noon, with stratified open pair game at 1:00pm.

Congratulations to the following people who have achieved new ranks with ACBL: Annette Taylor has now achieved Sectional Master. Barbara Newman is now a Life Master. Richard McDowell has achieved Silver Life Master.



LEHIGH VALLEY 133

Dave Kresge

215-536-8839

kresgede@aol.com

The unit will hold its annual Holiday Party on Sunday November 13th at the Brookside Country Club. The gala affair will begin at noon with a fabulous dinner followed by the annual meeting and a pairs game. Contact Lori Bosis for tickets. The Lehigh Valley Fall Sectional will be held at the West End Youth Center, on 21 October through 23 October. The District Flight A North American Pairs will be held in conjunction with the sectional on Saturday and Sunday. Please see page 45 for the flyer.

September 2011

There has been a change to the unit game schedule. The unit game in September will be on Wednesday, September 14 at the temple in Bethlehem at 7:00 PM and will be the Instant Matchpoint Pairs. The game will be preceded by a unit board meeting.



PCBA 141

John Marks

215-891-0602

JGMMarks@aol.com

It was kind of quite during the previous quarter in Unit 141. There were only two Unit events that occurred during the quarter: The May Shore Sectional in Mays Landing, NJ where the three top players were Martin deBruin, Egg harbor, NJ with 22.33 Master. Points, Betty Scull, Egg harbor, NJ with 19.33 Master. Points. and Dick Morgen, Havertown, PA 18.35 Master. Points. The two top players in the Intermediate Newcomer events were Thomas and Margaret Ward, Ventnor, NJ with 2.83 Master. Points. The Conclusion of the Solomon Teams event: Flight A: The Rabinowitz Team (Marty and Gloria Rabinowitz, Rick Rowland, Howie Cohen, Luis Pietri and Cory Krantz) defeated the Korth

team (Art Korth, Meyer and Ethan Kotkin, Daisy Goecker, Jane Segal and John Marks). The match was broadcasted on the BBO Vugraph with commentary from a few experts. Flight B: The Giesler team (Mike Giesler, Allison Brandt, Carl Peachonock and Kris Varhus) defeated the Klein team (Lewis Klein, Bruce and Jacki Williams, Bill Gronick, Edie McAlpin and Mike Mayer). Flight C: The Dehlin Team (Barry Dehlin, Carol Vorchheimer, Lucille Schlack and Patrick Drake) won their flight in the Round Robin.

A special thanks to Mike Giesler who coordinate and supervised the event and congratulations to the winners.

PCBA Unit 141 next Sectional Tournaments will be in September (Summer) Section Tournament scheduled for September 9 to 11, 2011 at the Crescent Shrine, Mount Holly, NJ and October (Autumn) Section Tournament scheduled for October 14 to 16, 2011 at the fireman's Memorial Hall in Conshohocken, PA. A Pro-Am game is scheduled for the Friday evening session at the October Tournament (October 14). This event will give the Newcomers to bridge an opportunity to play with the "experts". The pair events for the Intermediate / Newcomer (IN) at the Sectional

are fairly well attended; however, the Unit would like to see more IN players become involved and attend our sectionals.

Mark your calendars for future District 4 Valley Forge Regional Tournaments at the Dolce Hotel and Resort in King of Prussia, PA.: March 5 to 11, 2012 (Early because of the Philadelphia Summer 2012 NABC, July 12 to 22, 2012); June 17 to 23, 2013 (Back to our normal time frame). And especially keep in mind the Philadelphia Summer NABC in 2012 (July 12 to 22, 2012). This is only less than a year away.



CENTRAL PENN 168

Kelly Zeller

717-246-8034

kmzeller1@comcast.net

Here we are again Unit 168 Members, preparing for another Fall/Winter season. While you are packing away patio furniture and grills and bringing plants indoors, mark your calendar with these Unit #168 functions; Hagerstown Sectional 9/23 - 9/25 at the Williamsport American Legion; Lancaster Regional 10/31 - 11/6 at the Lancaster Host Resort; Annual Unit Meeting, Sunday, 12/4 at the Harrisburg Bridge Club, Dinner provided, this is a Swiss Team event.

The Christmas in July, Charity Swiss, that was held at the Bridge Boardroom on July 10th was a huge success. There were 17 Tables, a re-wrapped gift raffle and a picnic style dinner. Thanks to Bridget Whitley and Linda Ivanoff for running this function. Thanks to Edward Scanlon for housing this event and let's not forget Ella Zimmerman, Joyce Kelkis and Ericka Scanlon who also helped to make this a great day for Bridge and fun.

Team standings at the end of the day: 1. Michael & Kelly Zeller, Ella Zimmerman, Linda Ivanoff; 2. John & Selena Swanson, Buddy & Joann Hano; 3. Edward Scanlon, Ed Magee, John Leonard, Mike Young; 4. Lewis Shapiro, Ruth Sherman, Witold Palosz, Jim Maldeis; 5. Carl Leffler, Gayle Brass, Mary Norton, Stan Cohan. Thanks to all who attended, Let's do this again next year!

Speaking of next year, watch the announcements for the upcoming schedule for 2012 and be nice to your partner, so you have a partner, for any future Bridge events.



DELAWARE 190

Marie Filandro

302-234-0623

filandro@aol.com

Annual DSBA elections, and the unit membership meeting will be held at the Bridge Studio in Wilmington on Monday, September 12. The meeting will begin at 5:45 p.m. and the membership game will follow at 7 p.m.

Please plan to participate in our Diamond State Sectional, scheduled for Friday, September 16th through Sunday, September 18th at the Bridge Studio in Wilmington. For a complete schedule of events, please visit our website. If you plan to play on Sunday in one of the team events, please note that the DSBA will be providing a complimentary pizza lunch during the short break between sessions.

The Unit 190 Board of Directors has been extremely busy this year. A committee was formed to review and revise our Unit Bylaws and our Certificate of Incorporation. Since I was a member of the committee, I know just how much work was involved. Sincere thanks to Pete Filandro, Steve Herrmann, Richard Popper and Jess Stuart for all their efforts.

The DSBA was originally char-

tered in 1957, and our certificate of incorporation has now been reviewed and restated. The unit bylaws were last revised in 1995. Needless to say, lots has changed in the bridge world since then. Our committee worked on a total revision of the bylaws and the unit plans for members to vote on the revision during the September Diamond State Sectional.

The unit's annual Pro-Am event, held on Wednesday evening, June 15th was a huge success. Players participated in two locations - the Bridge Studio in Wilmington and Memorial Hall at Ocean View Presbyterian Church. The same boards were played simultaneously at both the upstate and downstate sites. Overall winners were Carl Williams and John Campbell and runners-up were Betty Crane and Catherine McHugh. We are all looking forward to next year's pro-am team and pairs events. Thanks to Mike Mocella, Intermediate/Novice Chairperson, for organizing these fun events.

It's great to see our members continue to advance through the ranks. Congratulations! New Life Masters are Mary Lou Walsh and Sharon Weintrob; new Bronze Life Masters are Lila Childres and

Bitsy Klein. Maxine Alexander is our new Silver Life Master; and Fred Gillespie is our new Gold Life Master.

SUSQUEHANNA 217

Jacqueline Humilovich

814-237-5534

psu4814@comcast.net

The annual **State College Sectional Tournament** was once again a big success thanks to the efforts of chairperson, Ed Bissell, Susan Nichols and her many volunteers who provided outstanding hospitality, and Kevin Burns and Linda Martin who hosted the greatly appreciated Saturday picnic.

State College Tournament winners in each flight are as follows: Fri. Aft: Carol Reitz & Jess Goodman/Jane Whitley & Gail Whitley/ Nevin Krentz & Shirley Krentz. Fri.Eve: Judy Stein & Gene Waltz/ Estelle Frankl & Joann Shepard/ Shirley Miller & Jill Anderson. Sat. Aft: David Buckthal & John Sheaffer/Donald Hollinger & David Chen/ Herbert Stratton & M. Robin Chilson. Sat. Eve: Kevin Burns & Jim McKeown/Michael Anesko & Barbara Mateer/ Herbert Stratton & M. Robin Chilson. Sun. Swiss: Michael Anesko, Barbara Mateer, Susan Greenleaf, Judy Stein/David Chen, Norman

Deno, Joanne Shepard, Jan Bristol/Elaine Fuller, Sandra Johnson, Susan Nichols, Jacqueline Humilovich. Masterpoint Race: Michael Anesko (13.26) Mary ann Churba (13.01) Ed Bissell (13.01)

Don't forget to attend the **Susquehanna Sectional** at the Williamsport Bridge Club. The tournament will be held **Sept.16-18. See page 37.**

Beginning this month, the State College bridge games will be located at a new site. We give our sincere thanks to Don Strickler who has provided the unit players with a wonderful facility for many years, and we express our deep appreciation for his tireless efforts in promoting bridge in State College. The game times and days will continue as at present. The new location is: **Unitarian Fellowship, 780 Waupelani Drive Ext., State College, PA 16801.**

Finally, we are saddened by the loss of a wonderful person and Silver Life Master, Eleanor Lindstrom. Ellie's gracious smile and soft giggle will surely be missed by her many friends and fellow players.



MASTER SOLVERS December 2011 PROBLEMS

Send your answers to hbethe@aol.com not later than October 1, 2011. Please include your name in the e-mail.

Problem 1

IMPs, Both VUL, Dlr E

♠ - ♥AQ10763 ♦1062 ♣QJ86

West North East South

-- -- P ??

Problem 2

IMPs, Neither Vul, Dlr W

♠AQJ102 ♥6 ♦AKJ92 ♣74

West North East South

1C 2H* P ??

* Weak

Problem 3

Matchpoints, N-S Vul, Dlr N

♠KQ8532 ♥J108 ♦A92 ♣J

West North East South

-- 1D X XX

1S P P ??

(A) Do you agree with XX?

(B) What Now?

Problem 4

IMPs, Neither Vul, Dlr N

♠J9852 ♥10 ♦K1094 ♣K109

West North East South

-- 2C P 2D*

P 2H** P 2S***

P 3H P 3N

P 4C P ??

* WAITING

** KOKISH: STRONG HEARTS OR GF
BALANCED

*** FORCED

DISTRICT 4 MASTER SOLVERS CLUB

HENRY BETHE, DIRECTOR

I have made a few changes this month. I have edited less, as I now have almost unlimited space. I also now have a larger pool of votes: I posted the problems on Bridgebase.com, an online site devoted to articles and other items of interest to bridge players. The votes there are shown after the Panel's vote.

Problem 1.

Matchpoints, Neither VUL, Dlr E
South holds: S-K9 H-A10 D-K10 C-10987543
West North East South
-- -- P P
P 1H P ?*
* 2C would be Reverse Drury

1NT 25 (9) (39) 2NT 15 (2) (3) 3C 12 (1) (7) 2C 10
(1) (1)

Miller: 1NT. First bid is easy. Next one might be more difficult.

Shapiro: 1N. Methods have endplayed me into this, as I can't bid a natural, maximum pass with long suit 2C, since I understand it shows a fit and A10 isn't good enough. 3C is said to show long clubs but even with a 7-card suit, its toplessness makes me want not to misdescribe the hand in that manner. Hand may be worth 2N, if it were natural, but since I don't have agreements with this partner, I'd fear it shows a hand that reevaluates to a very good raise, as it would by an unpassed hand... By the way, even for me, this is close to an opening 1-bid to begin with and it won't surprise me if you get a bunch of complaints about failing to open here – it does measure 13.45 on the Kaplan-Rubens scale.

Greco: 1NT. I would have certainly opened 1C, but having failed to do so I have two options either 1NT or 3C (the meaning of which may not be clear). I prefer 1NT: opposite a minimum opener such as AQxx/KQxxxx/Qx/x I am nearly cold for 5H and partner will pass 3C, which might not even make.

Rowland: 1NT. I have the agreement with some partners that 2NT shows clubs, but the suit is too bad. 3C would be fit showing by a passed hand, so that's out too.

K.Cohen: 1NT. I would have opened the bidding with a 7 card suit with an Ace and 2 Kings on the side. I do not know what 3 Clubs undiscussed means. If it were invitational I would bid it. Therefore I only have 1NT left to bid, and I am not at all happy about bidding it.

Gorkin: 1NT. Any number of clubs either misdescribes the strength of the hand or the strength of the clubs. A forcing NT is not perfect, but leaves many options open. The one call that causes you real problems is if partner bids 2D. Now you have to choose between two underbids (2H or 3C) or two overbids (3H or 4C) or a very offshape 2N.

S.Teukolsky: 1N. Here 3C would be a fit-showing jump (hearts and clubs). With all our points outside clubs, 1N is not too bad on this hand.

R.Teukolsky: 2C. Ace-ten isn't a terrible trump holding, and all other bids are worse.

A10 is indeed not terrible, but 2C promises real heart support, and you can never find clubs after bidding 2C!

Shuster: 2NT. Typical Drury conventions are that 2NT shows clubs and that jump shifts are mini-splinters. I'll assume my expert partner knows this. Where was I during the previous round of bidding?

Goldberg: 2NT. Assuming it is natural, I may as well give my partner a vote in case he has an 11 count with a stiff club or something.

Note the difference in opinion on the meaning of 2N. In my partnerships I actually play that 2N by a passed-hand is fit-showing with clubs and 3C is clubs.

Glassons: 3 C, invitational with 6+ clubs.

B. Cohen: 3C, tough choice between 2N and 3C. It just seems right to bid a 7-card suit.

Schmidt: 1N. Should be unanimous.

Almost all the comments I removed favored 1N. Some said that 1N, even by a passed hand, was forcing. That is a non-standard agreement. At most it is Osemi-forcing. Ó Good passed-hands with clubs are more common – at least among those of us who still play 2D as a weak-two – than hands with diamonds. Which might lead to considering using 2C by a PH as natural and 2D by a PH as showing the constructive raise. Which does not apply if you play Flannery or Precision or Multi 2D. Several people commented that they would have opened. Reasonable, although I can imagine many problems thereafter. It certainly was not unreasonable to pass 10HCP and a topless suit.

Problem 2.

IMPs, N-S Vul, Dlr N

South holds: S-J52 H-AKQ6 D-K2 C-J1074

West	North	East	South
--	1C	2S	X
P	3S*	P	??

* Undiscussed

4S 25(4)(6) 4C 22(3)(30) 5C 19(2)(4) 6C 18(1)
(4) 4N 18(0)(1) 3NT 17(2)(7) 4H 16(1)(5) 4D 12
(1)(0)

I have never given a problem that got eight different answers, all with reasons behind them.

Raskin: 3NT. My first obligation is to bid NT with a card in the opponents suit, then see what partner does at his next turn in order to determine what he meant by his 3S call.

Schmidt: 3N. Toughest problem of the set. I hope partner can continue on over 3N, but I don't expect it. Any other bid pretty much commits us to slam, but I'm too worried about diamond control to do that. If partner passes holding AKx Jx Qxx AKQxx, I'll apologize.

If you are going to assume that partner is looking for a partial stopper in spades, then 3N is clearly okay. If you think Schmidt's hand is possible, then 4N to show the strength looks better.

Greco: 4C. Partner has made a game forcing bid of some sort. They either have a strong four heart bid with a spade control or they have a hand looking for me to bid 3nt with a stopper. I will start with four clubs and see what partner does as I have a great hand either way. If partner passes after cuebidding when I make a negative double forcing us to the three level then I will find a new partner.

R.Teukolsky: 4C. Partner will now clarify 3S. We would need a full spade stopper to bid 3NT.

Glassons: 4C: We play that a cuebid later in the hand is game-forcing, so 4 clubs will allow us to set trump for partner.

Foster: 4C. My guess is that partner's 3S bid is something like "bid the better of your hearts or diamonds", so my bid is an attempt to exclude diamonds, and to show club support, even though the club holding by partner is in some doubt. Partner should be very certain that I hold four hearts and no spade stopper since I did NOT bid either 3 NT or 4 hearts.

Nuckols: 4C. Partner's cue bid should mean, "Do something intelligent, and I promise another bid if we're below game." My 4C bid should deny a spade stopper and show reasonable club support. If he bids 5C, I'll

pass. If he bids 4D, I'll bid 6C. If he bids 4H, I'll bid 5H (but I'd like to bid 6H). **DYE:** 4C. I am angling for a club slam; seems likely if partner is short in spades. No fear of getting passed here as partner's cuebid promises another call. Expecting a control bidding sequence to ensue. (P'S: If YOUR partner begins the post-mortem with something like "well of course 3S shows a partial stopper for 3NT, isn't that standard?" - don't blame me.)

Harris: 4C. A tough problem, regardless of IMPs or matchpoints. It would be nice to know partner's tendencies. I think I might bid 3NT at matchpoints and should bid 4C at IMPs (although who our opposition is could influence my decision). If D were bid by opener and my clubs were D, it would be easy to bid 4D.

B. Cohen: 4C. While 3S was undiscussed, surely it is forcing to game. Partner may be searching for a spade stopper or may have hearts with me and be thinking of bigger things. I will bid 4C to get more information from partner.

Wachsmann: 4C. This bid provides the most information to my partner. The 3S cuebid assures me that we are heading to at least a game and the challenge is finding the correct strain. My partner knows I have a 4-card heart suit with the inability to bid 3N.

Miller: 4C. How strong must you be for the negative double? Partner already knows about your hearts. The problem here is how to show a little extra, plus a fit in clubs.

As a group the 4C bidders are slightly worried that partner will pass. Is that reasonable? I really don't know, but I was worried at the table. The problem with the following answer is that partner might think you have four hearts and longer diamonds. I know I would.

Goldberg. 4D. Partners cue bid is ambiguous. He may be looking for a spade stopper with long clubs, or he may have hearts or a 2N rebid without a stopper. My first obligation is to bid NT with a stopper. My partner can assume I have about 10+ if I'm balanced, or less if I have good club support. My point is that 4C is not forcing without agreement, or I would bid 4C. 5NT may get us to slam off 2 spade tricks. If over 4D partner bids 4H, I will bid 5H, looking for spade control. If he bids 4S, I will bid 6C which he can correct to hearts. It would be very easy to have a misunderstanding in this auction. You want to land on your feet.

Shuster: 4H. This problem is a tough nut and the difficulty comes from the ambiguity over what hand-type partner might hold to bid 3S. Partner could hold either a balanced hand in the 18-19 range lacking a spade stopper OR a hand with long, solid clubs and an out-

side trick or two. The strength of this hand strongly suggests partner will hold the latter hand type. There is a further quandary about how responder should advance lacking a spade stopper. There is some thought that any hand with a minimum ought to bid 4C, allowing opener to pass with the long, solid-club hand. Therefore, I won't bid 4C with this hand, as partner might sensibly take that as non-forcing. That leaves 4H and 5C and I choose 4H because it gives partner room to bid 4S with the long solid club hand. I don't make negative doubles with bad single-suited hands, so I don't expect partner to pass when short in hearts (and I might make anyways, even in a 4-2 fit). Too bad it isn't matchpoints, where we could get a near top for +620 when only 600 is available in clubs.

K.Cohen 4S. I think that partner is likely to have x xx Axx AKQxxxx or xx x Axx AKQxxxx. With my all purpose ambiguous Q bid, he may know how many clubs to bid. He is unlikely to have the hand with a very strong heart raise, because my Hearts are so good, but if he does, we should be fine. This hand feels that a Club slam is highly likely. It is hard to find another bid to explore the Club slam, and I am not good enough to just jump to slam. We could be easily be off the first 2 tricks.

Gorkin: 4S. Partner can't know I have this mountain, so bidding only a simple game does not do justice to this hand. He has forced to game with no control in hearts and only first round control of diamonds, so slam has to be in the picture. It's not clear what his 3S meant (asking for full or partial spade stopper, a real cuebid) but I think we have to make some move towards slam.

Shapiro: 4S. I hate it, since I think it should show better than 4th round control in spades. But your footnote is scary and implies there are multiple, legitimate ways to play this cue-bid, a horrifying thought. Assuming partner isn't a hopeless client, just trying to get me to play 3N, if I hold any hand with a spade control, we should have a play for slam, perhaps even a grand: ---, xxx, Axx, AKQxxxx or replace a club spot with the spade ace. It's hard for me to compose a hand where slam doesn't make, so I'll bid one. Over 5C or 5D, I'll bid 5H, forcing (since I could have bid it directly with an invitational hand). Remember, my cue-bid presumably showed a fit or at least a strong tolerance in clubs, since with a good hand with long hearts, I'd have bid 3H directly. Yeah, I know, it may not be practical to assume that partner will take an expert inference from my bidding, if he thinks that there are different ways to play his cue-bid other than a strong, game-forcing hand, without specific discussion.

STeukolsky: 4S. The primary meaning of partner's 3S is for us to bid 3N with a stopper. By not passing 3N if we bid it, he can show other strong hands. Here we are much too strong for 4C, which partner may pass.

The 4S bidders make a good case for a bid I did not even consider at the table.

Sprung: 5C. No stopper for NT. I'll trust we are off the first 2 spades, therefore no slam. If we were sure 4C was forcing, that would be better, but not worth the risk.

Schwan: 5C. I believe the 3S bid is a Western Cue Bid which asks South to bid 3NT with a spade stopper. South's J-x-x is not a stopper, especially after the weak 2S jump overcall. North's distribution is likely to be 1-3-4-5 or perhaps 2-2-4-5. At matchpoints, I might be more cautious and only bid 4C but, at IMPs, one shoots for game.

Rowland: 5C. I assume that partner has a good hand and is probably groping for 3NT. I showed values when I forced him to bid at the 3 level with the negative double. I might be a bit heavy, but bidding game seems right.

Filandro: 6C. The value bid. The worst hands I can envision lose one spade and need a club finesse. All other hands are near claimers. I avoid 4NT because, without discussion, I won't be certain if partner is answering in hearts or clubs.

Oh for the days when a cue bid meant, "I have first round control of the suit and I am hoping for a high level contract." As you can see, those days are long gone..

Problem 3.

Matchpoints, E-W Vul, Dlr S

South holds: S-QJ852 H-none D-AKJ2 C-J874

West	North	East	South
--	--	--	1S
P	2H*	P	??

* Game force

2S 25 (6) (42) 3D 22 (5) (15) 3C 17 (2) (9) 2NT 11 (0) (11)

Rather than bore you, I will print only a few comments for each bid; they get rather repetitive!

Shuster: 2S. I suppose this is a survey question as to whether 3m/2NT show extras or 2M shows extra length. I answer yes and no respectively and await partner's next call.

Greco: 2S. This is a matter of partnership style. I believe rebidding the five-card suit is the popular answer as bidding 2NT with a void is tough to diagnose and bidding three of a minor should show extras with four or a solid five-five opener. 2NT is a close second choice.

Sprung: 2S. Most play that 3/2/1 shows extras or 55. We don't have those, and 2NT with a void is impossible. 2S leaves partner room to rebid his hearts, then we will bid 3NT.

Dye: 2S. Does not promise 6 spades; just says I have no more descriptive call. A rebid at the 3 level should show extras, and my extra playing strength consists of a void in partner's suit, a dubious asset. Bidding 2NT has two flaws: the heart void and the concentration of strength in diamonds. 2S keeps us low, giving partner room to bid either minor; if partner bids 3S I will be content to bid only 4S.

Miller: 2NT. You only have two choices -- rebid spades or 2NT -- neither one is very good. You are not strong enough to bid clubs or diamonds. 2NT promises stoppers in the minors and is the best way to show these values. A good partner will take the constraints of the system into consideration.

Filandro: 3C. I dismissed a temporizing 2S because I will be poorly placed after 3H from partner. As to choosing between the minors in this and similar auctions, I believe "clubs first" is the most flexible. Suit quality is secondary to flexibility.

Nuckols: 3C. I play that this does not show extra values, just distribution, and I bid my suits up the line. If he bids 3H, I'll bid 3NT. I haven't decided what to do over 3D by him. I'm hoping I won't have to face that.

3D would be fourth-suit forcing. One advantage of 2S is that three of either minor by partner will be natural.

Wachsman: 3C. Since we are in a game forcing sequence I want to show my pattern while allowing the most bidding space.

K.Cohen: 3D. I usually bid up the line with two 4-card minors, but my Diamonds are just so much better than my Clubs. This may be my only chance to show a natural Diamond suit, and give Partner the best picture of my overall hand strength.

Gorkin: 3D. I tend to treat this as showing extras, but many do not after a 2/1 response. Even if it does theoretically, any other call is so flawed that it is the only sensible one. If 3N, 4H, or 4S are the right-contract this will get us to it. If something else like 5D or 5C is right, then 3D should lead there.

The common wisdom is well summarized by Doug Dye and the Sprungs. With minimum opening values, the only rebids allowed are

2S, 2N and 3H. 2S is the default when you do not have heart support and your hand is unbalanced. There are many, however, who believe 2S should promise six spades, and that partner's game force allows you to bid a new suit at the three-level on minimum misfitting values. Obviously an area you should discuss with partner.

Problem 4.

IMPs, Neither Vul, Dlr S

South holds: S-J2 H-K9532 D-K C-AKJ84

West	North	East	South
--	--	--	1H
P	1S	P	2C
P	3C	P	??

3D 25 (4) (20) 4C 21 (2) (11) 3S 19 (2) (4) Pass
 14 (4) (26) 3NT 12 (1) (3)
 5C 11 (0) (7)

Whether to make a game try is the theme of this problem. There is an added bonus for bidding – and making – a game. For trying is extra hcp; against that the HK is opposite shortness and the DK is a problematic value.

Greco: Pass. Very close. The soft nature of my hand and partner's lack of bidding 2NT has convinced me to pass although it is very close. Partner may be stretching here.

Shuster: Pass. All the indicators point to taking the low road. The vulnerability, the lack of spade and heart spots, and no fast cashers outside of clubs more than counterbalance the extra club trick I hold.

Dye: 4C. Can you "counter-invite"? I believe so. I'm also bidding out my shape so partner can better evaluate the extent to which his HCPs are working. At IMPs there is no premium on reaching a NT game and in any event if partner has the right cards to generate 9 fast tricks in NT then 5C is a likely make as well.

Foster: Pass. Partner's 3 club bid is invitational and forward going of course, but she would have to have a really special hand for us to make 3 NT or a game in clubs. Bidding on is NOT worth the risk, in my view. However, I will be sorry I passed if partner comes down

with aces and the cards behave well.

Filandro: Pass. Without regret. Partner's courtesy raise usually delivers 8 - 11 HCP. Any making game (whether 3NT, 4H, or 5C) requires the maximum in HCP, and perfect location, too. 4H will additionally require trumps breaking 3 - 3. And 5C requires the points to include two aces and probably a fifth club, too. All of the game targets are too small to justify an excursion beyond the 3C safety level.

Wachsman: Pass. Partner did not bid 4th suit forcing to game so the best he can have is an invitational hand. The fact that the opponents have been quiet is a tipoff that the majors are not breaking favorably. Let the other table holding our cards get into trouble.

If you do try, which try?

Raskin: 3D. Show values in the D suit since 3NT is still a possible contract and I want to give partner a chance to get there. This bid is a little pushy but we are playing IMPs and 5C doesn't seem like the game to be in if we are going to play in game.

Nuckols: 4C. I don't think this is forcing, but I hope he doesn't pass.

Teukolsky: 3S. We don't have enough to bid 5C, and we have too much to pass 3C. Over 3S, if partner bids 3NT or 4S we'll pass. If he bids 4C we'll try 5C. Non-vul in imps should push for game rather than play 3 of a minor.

Rock: Pass. Partner is giving me a courtesy raise - could have as few as eight points. Pass is the best chance for a plus. In IMPs, I would push a little more if vulnerable.

Schwan: 3♦. Again, we have the flavor of the month – the Western Cue Bid – asking North to bid 3NT with a diamond stopper. The ♦ K becomes more valuable if North has additional help in diamonds. In that case, 3NT should be easier to make than 5♣.

Harris: 3D. With a D stopper I would rebid 3NT. I should be showing a value bid and semifeature and leaving it up to partner as to the final contract. Plan to pass a 4C rebid by partner as fourth suit forcing was not used.

K. Cohen: 3D. There is still a good chance that we may have a game in either 3NT or 5Clubs. I owe partner a game try bid, and despite only having a stiff King, it is also the cheapest bid allowing maximum space to explore the possibilities.

Rowland: 3D. Let's give partner a chance to weigh in. I'm passing 3NT and raising 4C to 5C.

Sanders: P. We don't have points for a minor game and we don't have a

major fit.

Miller: Pass. Partner could bid fourth suit, but didn't.

Schmidt: 4C. There are lots of hands partner can hold where 5C makes and 3N goes down, but only one (Q10xx QJ QJx Q10xx) where the reverse is true (and partner might have chosen 2N instead of 3C, with that one).

Goldberg: 4C. If he has AKxx, x, xxx, xxxxxx, or AQxx, Qx, xxx, Qxxx. I hope he will look at his controls.

Sprung: 3D. An ugly 15 points, but game is still possible. We need to decide between 3NT and 5C. Any other bid on the 3 level would be natural, so this is just a punt, looking for the right game.

B. Cohen: 4C, stiff KD is very questionable, but I hope partner has an ace or two and enough values to go to game.

Teukolskys: 3S. Must make a forward going bid in IMPS. The odds strongly favor trying for a non-vulnerable game when the alternative is 3 of a minor. Second choice is 4C.

Shapiro: Pass. It's only a non-vul game, if we've missed it. Problem here, too, is methods, since after my 2C bid partner likely had three ways to make an invitational bid in clubs: a wide-range 3C or beginning with a game-forcing 4th suit 2D, or – I guess – 4C, and even in these methods that must show a fairly specific, very black hand. Second choice – and I hope partner had bid 3C smoothly – would be 4C. I want no part of showing my secondary spades. Finally, this is yet another hand where a limited opening bid system would prevent partner from having to raise clubs to allow for the top of the 2C rebid range in standard, which can be much better than this hand.

Gorkin: 4C. While 3N could be the right contract, it seems that if partner's diamonds are good enough he would have bid 2N. 4S might be correct, but I think I should have a third spade to bid 3S. If partner's spades are that good, he should be able to bid 4S over 4C. All of that said it looks like 5C is the most likely game, if there is a game.

Glasson: 3 NT: Hopefully they will underlead their ace of diamonds, if partner doesn't have it.

Hickes: 5C. Who can know?--I want to be in game at imps—at match-points I pass.

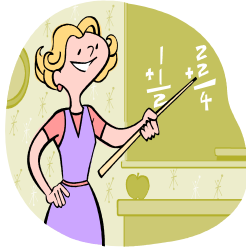
I left all comments in. Maybe they will convince you. They did not convince me. The imp aspect of the problem pushes me towards trying for game, but, as Eric says, the soft values push me towards Pass. In the scoring Pass was pushed down because nine panelists

wanted to push on. But none of the various tries seem to help partner towards making a decision that I will be comfortable with.
 Congratulations to Ken Cohen and to Lynn Harris.

Panelist	1	2	3	4	Score
Ken Cohen	1N	4S	3D	3D	97
Dan & Jo Sprung	1N	5C	2S	3D	94
Bernie Gorkin	1N	4S	3D	4C	93
Ray Raskin	1N	3N	2S	3D	92
Saul Teukolsky	1N	4S	3D	3S	91
Ed Shapiro	1N	4S	2S	P	89
Eric Greco	1N	4C	2S	P	86
Rick Rowland	1N	5C	3C	3D	86
Pete Filandro	1N	6C	3C	P	74
Connie Goldberg	2N	4D	2S	4C	73
Ros Teukolsky	2C	4C	3D	3S	73
Michael Shuster	2N	4H	2S	P	70
Joann & Bob Glasson	3C	4C	3D	3N	68
Solvers					
Lynn Harris	1N	4C	3D	3D	94
Douglas Dye	1N	4C	2S	4C	93
Ed Schwan	1N	5C	3D	3D	91
Bill Schmidt	1N	3N	2S	4C	88
Bill Rock	1N	4C	3D	P	86
Harry Nuckols	1N	4C	3C	4C	85
Bill Foster	1N	4C	3D	P	83
Robert Hickes	1N	4C	2S	5C	83
Barry Cohen	3C	4C	2S	4C	80
Dave Wachsman	1N	4C	3C	P	78
J.J.J. Newman	1N	4H	3D	P	77
Kathy Miller	1N	4C	2N	P	72
Howard Sanders	2C	3N	2S	P	66

BETTER BRIDGE TEACHER TRAINING SEMINAR

Taught by **Audrey Grant**



WHERE: Lancaster Regional at Lancaster
Host Resort, 2300 Lincoln Hwy East
WHEN: Nov 4, 2011 9:30- noon and 1-5 PM
and Nov . 5 9:30-11:45 AM
(observing the workshop)
FEE: \$50 (reduced rate from \$125 courtesy

of District 4)

This seminar is run by Audrey Grant. You will hear teaching techniques that work in large groups or small developed by Audrey over time and experience. You will become a better presenter of this great game.

Participants receive workshop notebook including sample lesson plans, and sample Better Bridge products: textbook, color coded cards, Magazine, Basics software.

To register: go to District 4 web site through ACBL.org and print the form for the TEACHER TRAINING, mail it with your check made out to Dist 4 ACBL to:

Mary Poplawski
600 Princeton Dr
Vestal, NY 13850

Space is limited. Register by Oct. 10. to guarantee your space.



There are three kinds of bridge players:

- (1) Those who can count and
- (2) those who can't.

Lancaster
Red Rose
Regional
Oct. 31– Nov. 6, 2011

Lancaster Host Resort
 2300 Lincoln Hwy. East • Lancaster PA 17602
 717-299-5500 • 800-233-0121

Room rates: \$125.00 price includes all taxes
 Single, Double or Quad
 Includes Free Breakfast Buffet for all Occupants

Chairpersons: Deb & John Klinger
 Questions concerning the tournament,
 partnership or the IN program?
 Call 717-394-0171 or dklinger@epic.net

Head Director: Sol Weinstein

FREE PARKING
FREE DRINK TICKETS
Golden Opportunity Pairs
Morning Compact KO Daily
 Single Session BAM or
 Swiss Team Daily
 Duplimate Hands for all
 Pair Games (with analysis)
Hospitality nightly
 Daily Bulletins
Section Top Prizes
Guest Speakers daily
 College/Youth Discounts
 Hundreds of Outlet stores nearby
 for between-sessions browsing
 Beautiful golf course
 and walking trail
 Many restaurants nearby

*For Complete Schedule of Events and Information
 on other District 4 Regionals: www.district4.info*

District MP Race Leaders through August 6, 2011

	<u>Mini McKenney</u>	<u>Ace of Club</u>
0-5	Richard Rosenfield	
5-50	Forbes Tuttle	
20-50	Nancy Chorpita	
50-100	Patricia Jardin	Louis Scheffer
100-200	Kenneth Harris	Tibor Guthin
200-300	Gary Hillenbrand	Mary Kondash
300-500	Bitsy Klein	Suzanne Goldberg
500-1000	John Dickenson	Steve Valencic
1000-2500	Elaine Clair	David Abuhove
2500-5000	Corey Krantz	John Sheaffer
5000-7500	Meyer Kotkin	Philip Monyer
7500-10,000	Tom Weik	Rhoda Kaufman
over 10,000	Ken Cohen	J & S Swanson

2011 LANCASTER RED ROSE REGIONAL OPEN SCHEDULE
LANCASTER HOST RESORT 717-299-5500

MONDAY October 31, 2011

Kickoff Bracketed KO Teams (continues thru Tuesday)	8:00
Lori Kraus Stratified Charity Pairs (1500/1500+)	8:00

ROSEDAY November 1, 2011

Kickoff Bracketed KO Teams continue	9:00am, 1:00 and 7:30
Roseday/Wednesday Morning Bracketed Compact KOs (1 st & 2 nd)**	9:00
Joe Hess Stratified AM Side Game Series (1 st) Continues thru Saturday	9:00
Eleanor Alboun A/X Pairs (0-3000/ 3000+)	1 & 7:30
GOLDEN OPPORTUNITY PAIRS (0-300, 300-750)	1 & 7:30
Roseday-Wednesday Afternoon Bracketed KO Teams (1 st & 2 nd)**	1 & 7:30
Vera Maurer Stratified Side Game Series (1 st & 2 nd)	1 & 7:30
Roseday Stratified Single Session B-A-M Teams	7:30

WEDNESDAY November 2, 2011

Roseday/Wednesday Morning Bracketed Compact KOs(3 rd & final)	9:00
Wednesday/Thursday Morning Bracketed Compact KOs (1 st & 2 nd)**	9:00
Joe Hess Stratified AM Side Game Series	9:00
Roseday-Wednesday Afternoon Bracketed KO Teams (3 rd & Final)	1 & 7:30
Wednesday-Thursday Bracket KO Teams (1 st & 2 nd) continues Thursday**	1 & 7:30
Don Marlett A/X Pairs (0-3000/ 3000+)	1 & 7:30
GOLDEN OPPORTUNITY PAIRS (0-300, 300-750)	1 & 7:30
Vera Maurer Stratified Side Game Series (3 rd & 4 th)	1 & 7:30
Headless Horseman Stratified Single Session Swiss Teams	7:30

THURSDAY November 3, 2011

Wednesday/Thursday Morning Bracketed Compact KOs(3 rd & Final)	9:00
Thursday/Friday Morning Bracketed Compact KOs (1 st & 2 nd)**	9:00
Joe Hess Stratified AM Side Game Series (3 rd)	9:00
Wednesday-Thursday Bracketed KO Teams (3 rd & Final)	1 & 7:30
Straw Hat KO Teams(1 st and 2 nd) continues Friday	1 & 7:30
Horse and Buggy BRACKETED Open Swiss Teams ***	1 & 7:30
Pumpkin Patch Stratified Open Pairs	1 & 7:30
Vera Maurer Stratified Side Game Series (5 th and Final)	1 & 7:30
Pickled Eggs Stratified B-A-M(single session)	7:30

FRIDAY November 4, 2011

Thursday/Friday Morning Bracketed Compact KOs (3 rd & Final)	9:00
Friday/Saturday Morning Bracketed Compact KOs(1 st and 2 nd)**	9:00
Joe Hess Stratified AM Side Game Series (4 th)	9:00
Straw Hat KO Teams(3 rd and final)	1 & 7:30
Moonshine Weekend Bracketed KO Teams (1 st & 2 nd)	1 & 7:30
Road Apple A/X Pairs (0-3000/ 3000+)	1 & 7:30
GOLDEN OPPORTUNITY PAIRS (0-300/ 300-750)	1 & 7:30
Covered Bridge Stratified Side Game Series (1 st and 2 nd)	1 & 7:30
Golden Mule Stratified Single Session Swiss Team	7:30

SATURDAY November 5, 2011

Friday/Saturday Morning Bracketed Compact KOs (3 rd & final)	9:00
Joe Hess Stratified AM Side Game Series (Final)	9:00
Moonshine Weekend Bracketed KO Teams (3 rd & Final)	1 & 7:30
Saturday/Sunday Bracketed KO Teams (1 st & 2 nd)	1 & 7:30
The Dean Berger Flight A/X Pairs (0-5000/5000+)	1 & 7:30
Farmer's Market Stratified B/C/D Pairs (0-750/ 750-1500/ 1500-2500)*	1 & 7:30
Covered Bridge Stratified Side Game Series (3 rd & Final)	1 & 7:30
Saturday Night Stratified Single Session Swiss	7:30

SUNDAY November 6, 2011

Saturday/Sunday KOs (3 rd & Final)	10:00
Hoe Down Flight A/X Swiss Teams (0-5000/5000+)*	10:00
Fall Harvest Stratified B/C/D Swiss Teams (0-750/ 750-1500/ 1500-2500)*	10:00
(All Swiss Teams will be seven 7 board matches with a half hour break)	
Lunch Tickets Sold Before Game	

* Strats are determined by average master points
 ** Knock Outs with two brackets or less will be handicapped.
 *** Top Bracket is available to all teams. All other brackets consist of eight teams.
 Overall WINNERS for each bracket.
 All Stratified Games (unless otherwise noted) are 7:50/2500/2500+
 Zip Knock outs at 11:30 Wednesday through Saturday night

2011 Lancaster Regional Intermediate/Novice Schedule

(SEE OPEN SCHEDULE FOR GOLDEN OPPORTUNITY PAIR GAMES)

MONDAY, October 31, 2011

Kickoff 300/200/100 and 50/20/5 Pairs	8:00
---------------------------------------	------

TUESDAY, November 1, 2011

300/200/100 and 50/20/5* Early Bird Pairs	9:00
300/200/100 Stratified Golden Mule Pairs	1/7:30
50/20/5 Wagon Wheel Pairs	1/7:30
0-5 and 0-20 Trophy Pairs**	1/7:30

WEDNESDAY November 2, 2011

300/200/100 and 50/20/5* Early Bird Pairs	9:00
300/200/100/50/20/5* Stratified Brown and White Cow Pairs	1/7:30
49er Trophy Pairs**	1/7:30

THURSDAY, November 3, 2011

300/200/100 and 50/20/5* Early Bird Pairs	9:00
300/200/100/50/20/5* Stratified Pumpkin Pie Pairs	1/7:30
99er Trophy Pairs**	1/7:30

FRIDAY, November 4, 2011

300/200/100 and 50/20/5* Early Bird Pairs	9:00
300/200/100/50/20/5* Stratified Haystack Pairs	1/7:30
0-5 and 0-20 Trophy Pairs #2**	1/7:30

SATURDAY, November 5, 2011

300/200/100 and 50/20/5* Early Bird Pairs	9:00
300/200/100/50/20/5* Stratified Milk Can Pairs	1/7:30
299er and 199er Trophy Pairs**	1/7:30

SUNDAY, November 6, 2011

300/100/50 Stratified Corn-on-the-Cob Swiss Teams	10:00
	One session

*Stratified at Directors Discretion

**I/N Trophy Pairs will use the best cumulative percentage of afternoon and evening games.

All I/N games are single sessions with guaranteed partners 45 minutes before game time.

Expert lectures 45 minutes before 1/7:30 games and 20 minutes before 9:00am games.

WORKSHOP with AUDREY GRANT

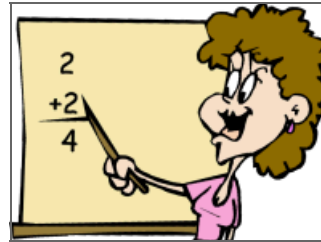
Lancaster Host Resort at 2300 Lincoln Hwy. East

TOPIC: MAXIMS ON DEFENSE

TIME: 9:30-11:45 AM

DATE: Nov. 5, 2011

FEE: \$25 (less than her usual fee)

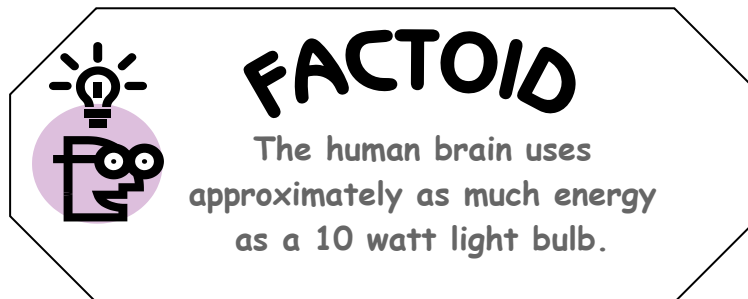


Defense is one of the neglected parts of bridge, yet so important. Work with the master teacher to clean up your defense. A partner is not required. You will be seated at a card table and will have a chance to bid and play specific hands which illustrate the points being presented with Audrey using the most effective and up-to-date teaching methods.

To Register: go to District 4 web site through ACBL.ORG and print the form, mail it with your check made out to Dist 4 ACBL) to :

Mary Poplawski
600 Princeton Dr
Vestal, NY 13850

Space is limited. Register by Oct. 10, 2011 to guarantee your space.





FOR NOVICES ONLY

by

MARTI RONEMUS

mronemus@comcast.net

There's nothing like getting out of town and seeing the world to make you take a look at your own attitudes and beliefs. I've had a wonderful time over the last few months teaching week-long bridge workshops from Vermont to West Virginia, meeting the nicest, smartest and most fun people around. And I've had some insights into how bridge is viewed.

One shocker is that there are hoards of people out there who lead long and productive lives without Stayman or transfers. I have no idea how they do it, or why, but it's true. The biggest challenge I face on these excursions is the diversity of the group I'm teaching. I usually start out by asking for a show of hands of those who play Stayman. Interestingly, this is a dividing line for skill and knowledge levels. (Incidentally, I was simply stunned when I found that everyone in my last group not only played Stayman, but transfers. Wow!)

Another eye-opener is that while these folks have all come to spend a full five days improving their games, they **don't** want to memorize a lot of stuff. I must admit I can't blame them. I have a theory that at (most of) our ages, every new thing we memorize causes us to forget something old. This has encouraged me to rethink my teaching. Now I focus entirely on concepts...if people understand **why** we do something, they don't have to memorize.

Example? One of my favorites is what I call the Theory of the Crummy Dummy. Picture this hand: ♠xx ♥x ♦xxx ♣Kxxxxxx. If this hand is dummy, it is useless. The opponents can lock declarer out, never letting declarer

take advantage of the long clubs. The hand is truly a Crummy Dummy. **BUT!** If this hand is the **declarer** in that long club suit, it actually brings a lot of goodies to the table. Once people grasp that a hand that is useless as the Crummy Dummy but may be super if the long suit is trump, all sorts of doors open. Now we can understand preempts, weak jump shifts, inverted minors and all sorts of stuff...without memorizing. The concept is what is important.

I've also come to respect the diversity in bidding methods. When I give people a hand to bid, if they reach the optimum contract I don't care if they got there on the wings of an angel. If they're **not** in the best place, now we can talk. I am frequently reminded that there is **nothing** in bridge that three people agree on! I've learned to leave people alone unless they are missing the contract too often.

And now an eye-opener that isn't so pleasant: A large percentage of these people have played at a bridge club, and will never go back because of the way they were treated. There they are, dozens and dozens of lovely people, decent players with a passion and desire for the game, and you'll never meet them. They tried it and were turned off completely by the attitudes and behavior of our club players. Every one of those people represents a missed opportunity for us to grow our clubs and our games. Hmmm. Maybe I'm not the only one who should be re-examining attitudes, no?

So, I continue to be impressed by the super people who play our game and I'm grateful to have the chance to meet so many of them. Enjoy your games, be nice to strangers, and email me with your thoughts and questions. I have an answer for everything...and sometimes it's even right!!



DISTRICT 4 STARS



2011 SUMMER NABC TORONTO ON

- | | | |
|----|--------|--------------------------------|
| 1 | 158.41 | Howard Cohen, Philadelphia PA |
| 2 | 138.18 | Meyer Kotkin, Cherry Hill NJ |
| 3 | 112.36 | JoAnn Sprung, Philadelphia PA |
| 4 | 96.25 | Eric Greco, Wynnewood PA |
| 5 | 95.43 | Danny Sprung, Philadelphia PA |
| 6 | 87.18 | Ken Cohen, Philadelphia PA |
| 7 | 68.64 | Rich Rothwarf, Philadelphia PA |
| 8 | 65.75 | Barbara Rhoades, Wilmington DE |
| 9 | 59.33 | Thomas Weik, Reading PA |
| 10 | 59.33 | Rick Rowland, Wilmington DE |



UPSTATE NY REGIONAL

Liverpool NY August 1 - 7, 2011

- | | | |
|----|-------|------------------------------|
| 1 | 81.42 | Daniel Boye, Farmington NY |
| 2 | 80.50 | Larry Sunser, Camillus NY |
| 3 | 79.10 | Douglas Ross, Rochester NY |
| 4 | 65.58 | Thomas Andrews, Utica NY |
| 5 | 65.58 | Donald Dalpe, Baldwinsville |
| 6 | 59.46 | Saul Teukolsky, Ithaca NY |
| 7 | 9.46 | Roselyn Teukolsky, Ithaca NY |
| 8 | 54.46 | Mary Poplawski, Vestal NY |
| 9 | 54.46 | Harry Nuckols, Vestal NY |
| 10 | 40.61 | Sam Maitra, Webster NY |

VALLEY FORGE REGIONAL

King of Prussia PA - Aug 22-28

1. Marty Seligman	91.66
2. Rick Rowland	60.73
3. Doug Dye	57.83
4. Tom Weik	55.55
5. Albert Shrive	52.31
6. Edward Leach	51.15
7. Corey Krantz	48.10
8. Ken Cohen	46.60
9. Elaine Clair	44.50
10. John Dickenson	41.97

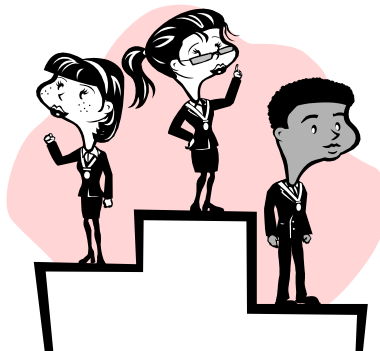


Notes from King of Prussia

(TOURNAMENT SHORTENED DUE TO HURRICANE IRENE)



- ♠ 1078.5 Tables
- ♥ 1081 Players Attended
- ♦ 937 Players Won Masterpoints
- ♣ 5776 Masterpoints Awarded





Play in the District 4 NAP Finals

Win \$\$\$ and Gold Points!

The event is played in three flights

Flight A — open to all players

Flight B — under 2000 masterpoints

Flight C — under 500 masterpoints and non-life master

All players must have qualified in a club-level NAP qualifying game during June, July, or August.

Masterpoint level is based on the June 2011 masterpoint cycle.

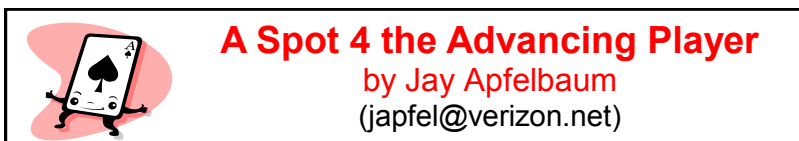
Win money to play at the National Finals in Memphis in March, 2012

In each flight, first place players receive \$700 each, second-place \$300 each, and third-place \$100 each. Players must play in the national event to receive the award.

Dates and Locations

Flight A Two-day, four-session event with about half of the field qualifying for the second day. October 22 and 23, 2011 (sessions at 10:30 and 3:30) At the Lehigh Valley Unit 133 Sectional West End Youth Center 848 N. 20 th Street, Allentown, PA	Flight B One-day, two-session play-through event. October 29, 2011 (sessions at 1:00 and 7:00) Bridge Studio in Wilmington, Delaware 1409 Foulk Rd, Suite 101, Foulkstone Plaza Wilmington, DE 19803 (302) 479 5431 www.bridge-studio.org
Flight C One-day, two-session, play-through event. October 22, 2011 This event will be held concurrently at various clubs throughout the District, similar to a STaC event. Check with your local club to see if they are hosting the event and for exact game times. A complete list of participating clubs will be posted on the District 4 website.	

Note: Players may play in more than one flight if qualified for each flight and there is no scheduling conflict. If you have any questions, visit the District 4 website at www.district4.info for more information and complete conditions of contest, or do not hesitate to contact Mike Giesler at mjgiesler@comcast.net or 215 806 9600.



This is a continuing series of articles written for the advancing player. I welcome any questions or suggestions about future articles. Please send them to the publisher. Who knows? You may be mentioned in a future article! Since beginning this series, I have been asked about several conventions. Keep asking! Your questions give me direction about what the next article should be about.

In this article, we will discuss two topics: What to bid with 6-4 in the Major Suits and what to do when the opponents lead out of turn.

I am always getting asked what to rebid after opening One Spade and hearing partner bid 1NT holding a six-card spade suit with a four-card heart suit. Most get quite frustrated when I tell them it depends on the relative strength of the two suits. The answer lies in the type of honors we hold in the spade suit, secondarily, the overall strength in the heart suit. Let us consider two different hands. In the first hand, opener holds KQJ1072 of spades and J852 of hearts. In the second hand, opener holds A109532 of spades and A842 of hearts. Now, let us assume that partner holds just enough to bid 1NT and has just one spade and three hearts. Ask yourself whether you would rather be in spades or hearts opposite that hand. On the first hand, spades would certainly play better. There will be no need to ruff a spade, and heart losers might be discarded on minor suit winners. On the second hand, hearts could easily prove the better contract.

There are a great many hands where the choice of rebid will be obvious. In making that choice, consider the probability that there will be no need to ruff a spade; that the only losers will be the top spade or spades. Consider the probability that playing in hearts will not provide a chance to ruff spades and avoid a loser in that suit. Holdings such as KQJ or QJ10 are ideal for rebidding the spade suit ahead of showing a heart suit. Broken holdings, such as A96432 or K108532 will often play better in the heart suit.

About the only time it may be better to bid two spades rather than two hearts holding a broken spade suit is when the heart suit

is of exceptionally poor quality.

When there is no clear choice between bidding two spades or two hearts, it is often better to bid hearts. This gives responder a chance to show a heart fit, failing which responder will often prefer back to spades holding a doubleton spade. This gives us a chance to land in our best trump fit on a wide variety of hands.

The bottom line is to favor a rebid of two hearts unless either the spade suit is so good that a heart fit does not figure to gain an extra trick or the heart suit is of exceptionally poor quality.

The second topic is what to do when there is a lead out of turn. For an opening lead, there are five choices: (1 and 2) Accept the lead and then decide who should be the declarer, (3) leave it as a penalty card, (4) require the correct defender to lead that suit, or (5) prohibit the correct defender from leading that suit. For a lead out of turn by a defender during the hand, there are four choices: (1) Accept the lead, (2) leave it as a penalty card, (3) require the correct defender to lead that suit, or (4) prohibit the correct defender from leading that suit. For a lead out of turn by declarer either defender may accept the lead. If neither defender accepts the lead, declarer will replace the card led out of turn and then lead from the correct

For an opening lead, keep the strong hand declarer. This could protect the strong hand from the opening lead. If one extremely distributional hand is better to keep that could make it more difficult for the defenders to know which tricks they are to cash (or set up) first.



hand. it may prove best to hidden as the detect the honors in being finessed on of the two hands is tional, it may be hand hidden. This


Sometimes, it will be clear which choice will work out to best advantage. In those cases, the non-offender should exercise the most favorable choice. There will be times when no choice is particularly clear. On those occasions, it may be best to remember the advice from Harry Goldwater, a former tournament director. He suggests it is best to accept the lead because anyone who is paying so little attention that they do not know who is on lead is unlikely to find the best one.

For any lead out of turn by declarer, it could be right to accept a lead if it weakens declarer's position in that suit or costs a valuable entry. Otherwise, it is probably best to let declarer replace the card and do whatever declarer thinks best.

For any lead out of turn by a defender during the hand, the important thing is to figure out which option will help the most. It could be right to accept the lead or require that suit from the other defender if it offers a free finesse. It could be right to forbid the lead because some other lead would be more helpful. Most of the time, the choice will be clear. If the choice is not clear, consider leaving the card as a penalty card and allowing the other defender to lead whatever the other defender wishes.



Did You Hear...



.....About the man who wanted to learn bridge in *one* day? He ordered 35 copies of *Five Weeks To Winning Bridge*.

.....About the lady who always went *down one* in 3 NT? When asked about this she said she was just following her teacher's advice: "Eight ever, Nine never."

September 9 - 11

**MOUNT HOLLY
SECTIONAL TOURNAMENT**

SEPTEMBER 9—11, 2011

CRESCENT SHRINERS TEMPLE
700 Highland Drive
Westampton, NJ 18066

**Lottery
Tickets for
Section Tops**

**Great
Location
Just 2 Minutes
off I-295**

FRIDAY, SEPTEMBER 9

10:00 STRATIFIED PAIRS ♦ STRATIFIED 299er PAIRS
Single Session Events—Stratified by average MPs of both players

FREE PIZZA LUNCH

2:30 STRATIFIED PAIRS ♥ STRATIFIED 299er PAIRS
Single Session Events—Stratified by average MPs of both players

WINE AND HORS D'OEUVRES

7:00 STRATIFIED PAIRS ♦ STRATIFIED 299er PAIRS
Single Session Events—Stratified by average MPs of both players

SATURDAY, SEPTEMBER 10

10:00 STRATIFIED PAIRS ♦ STRATIFIED 299er PAIRS
Single Session Events—Stratified by average MPs of both players

FREE SANDWICHES

2:30 STRATIFIED PAIRS ♦ STRATIFIED 299er pairs
Single Session Events—Stratified by average MPs of both players

SUNDAY, SEPTEMBER 11

FREE BAGEL BRUNCH

9:00

10:00 STRATIFIED SWISS TEAMS (play through with lunch served)
STRATIFIED 299er PAIRS—single session

2:30 STRATIFIED 299er PAIRS—single session

EARLY START TIMES
FREE BREAKFAST
FREE PIZZA LUNCH
WINE AND
HORS D'OEUVRES
AT 6:00 PM

FREE BREAKFAST
FREE SANDWICHES AT
LUNCH
TERRIFIC SNACKS SERVED
ALL DAY

FREE BAGEL BRUNCH
FREE LUNCH

\$12.00 per person per session (\$1.00 add for non ACBL members) Strats may be combined based on attendance

STRATIFIED A = 2000+ B = 750—2000 C = 0—750 ♦ 299er A = 200—300 B = 50—200 C = 0—50

ALL EVENTS ARE STRATIFIED BY AVERAGE NUMBER OF MASTERPOINTS OF BOTH PLAYERS

Tournament Chairman: Meyer Kotkin guymath@comcast.net (856) 424-8149
Partnerships: Tom Purl tpurl@hotmail.com (610) 518-6790 Jerry Craige antiquat1@comcast.net (609) 965-2275

Directions

For Driving Directions go to: <http://www.crescentshrine.org/contactinfodirections.html>
Take I-295 to Exit 45B toward Willingboro. Make the first right Jughandle on Springside Road which becomes Highland Drive. Shriners Temple is about 1 mile on the left.
Plenty of free parking.

September 16 - 18

Susquehanna Sectional Bridge Tournament

Williamsport, Pa 17701

Schedule of Events

Officially approved by ACBL

Hospitality:

Judy Stein
Fred and Sandy Gilbert
Ann Day
Marie Koch

Friday, September 16, 2011

Stratified Open Pairs 1:00 p.m.
Stratified Open Pairs 7:00 p.m.
Strat A (1000+) Strat B (300-1000) Strat C (0-300)

Partnerships
Vera Peters 570 368 1872

Saturday, September 17, 2011

Novice 0-20 Master points (3 tables minimum) 10:00 a.m.
Stratified Open Pairs 10:00 a.m.

Stratified Open Pairs 3:00 p.m.
Strat A (1000+) Strat B (300-1000) Strat C (0-300)

Sunday, September 18, 2011

Swiss Teams, first session 11:00 a.m.
Swiss Teams, 2nd session TBA
Strat A (1000+) Strat B (300-1000) Strat C (0-300)
Strats based on team average

General membership and Board Meeting between sessions.

Beef and pork barbecue luncheon between sessions: \$5.00

Entry Fee: \$8.00 for ACBL Members, per session
\$9.00 for Non or unpaid ACBL Members, per session
\$5.00 for Students, per session
Free coffee, soft drinks, and snacks at all sessions

Location of Tournament

Williamsport Bridge Club
1042 High Street
Williamsport, Pa 17701
570 322 5035

For more information contact

Chairperson, Peg Herz, 570 329 1444

Directions: From the center of Williamsport, travel west on High Street for 10 blocks. Bridge Club is on the Northwest corner of High and 6th Ave.

From the West, exit 220 at 4th Street exit. Continue into Williamsport. Stay on 4th Street to Rose Street.

Turn left on Rose Street to High Street, about 3 blocks. Turn right on High Street. Bridge Club is on the left about 3 blocks.

From the North (Rt 15) exit at Foy Ave/High Street. Continue East on High Street to corner of High St and 6th Ave. Bridge Club is on the left. For further help, call the Bridge Club on Monday or Friday 10:30 a.m. to 2:30 p.m.

Hospitality

Judy Stein Lois WentzlerPartnerships Judy Stein 570 368 1872
Ann Day

September 16 - 18

♦ ♦ ♦ ♦ ♦ Syracuse Fall Sectional ♦ ♦ ♦ ♦ ♦
September 16-18, 2011

Cicero Fire Hall
8377 Brewerton Rd
315-699-8377
Corner of Route 31 and Route 11
Cicero, NY

Friday, September 16, 2011:

11:00 a.m. STRATIFIED OPEN PAIRS
3:30 p.m. STRATIFIED OPEN PAIRS

Saturday, September 17, 2011

11:00 a.m. STRATIFIED OPEN PAIRS
3:30 p.m. STRATIFIED OPEN PAIRS

Sunday, September 18, 2011

11:00 a.m. STRATIFIED SWISS TEAMS

Play through- pizza and beverage available

All Events: BASED ON AVERAGE MASTERPOINTS
Unlimited/2000/500

CHAIRMAN: Bob Simard 315-656-3204 rsimard@twenvy.rr.com


DIRECTIONS TO THE TOURNAMENT SITE:

Take ROUTE 81 EXIT 30 CICERO, NY. Turn onto Route 31 West to stop light at the corner of Route 11 and Route 31.


MOTELS:

COMFORT SUITES 5875 CARMENICA DRIVE, CICERO (315) 622-2576
HOLIDAY INN EXPRESS 5860 CARMENICA DRIVE, CICERO (315) 288-5700
FAIRFIELD INN 3979 ROUTE 31 LIVERPOOL, NY (315) 622-2576

September 16 - 18



2011 Diamond State Sectional
 Wilmington, DE
 September 16, 17 and 18, 2011



Foulkstone Plaza	Wilmington Delaware
-------------------------	--------------------------------

Schedule of Events:

Friday, September 16, 2011

- 1:00 pm** Stratified Open Pairs (2000+/750-2000/0-750)
 Stratified 199er Pairs (100-200/50-100/0-50)
- 7:00 pm** Stratified Open Pairs (2000+/750-2000/0-750)
 Stratified 199er Pairs (100-200/50-100/0-50)

Saturday, September 17, 2011

- 1:00 pm** StrataFlighted Open Pairs A/X (4000 +/-0-4000)
 StrataFlighted Open Pairs B/C/D (1250-2000/750-1250/0-750)
 StrataFlighted 199er Pairs (100-200/50-100/0-50)
- 7:00 pm** Stratified Open Pairs (2000+/750-2000/0-750)
 Stratified 199er Pairs (100-200/50-100/0-50)

Sunday, September 18, 2011

- 11:00 am** A/X Swiss Teams (4000 +/-0-4000)
 B/C/D Swiss Teams (1250-2000/750-1250/0-750)

Pizza may be purchased between sessions or BYO lunch!

www.bridge-studio.org

www.unit190.org

Tournament Chair: Trina Williams 302-423-3535	Partnerships: Julie Hockersmith pjhockersmith@verizon.net	Tournament Director Head Director Alan Hodesblatt
--	--	--

ACCOMMODATIONS:

Quality Inn	4000 Concord Pike	302.478-2222
Best Western	1807 Concord Pike	302.656-9436
Homewood Suites	350 Rocky Run Parkway	302.479-2000
Courtyard	320 Rocky Run Parkway	302.477-9500
Inn At Wilmington	300 Rocky Run Parkway	302.479-7900



September 23 - 25

2011 FALL SECTIONAL BERKS MONTGOMERY BRIDGE UNIT #121

***** NEW LOCATION *****

THE INN AT READING
1040 NORTH PARK ROAD
WYOMISSING, PA 19610 (610- 372-7811)

FRIDAY, SEPTEMBER 23

STRATIFIED OPEN PAIRS..... 10:00 A.M.
STRATIFIED 299er PAIRS..... 2:30 P.M.
STRATIFIED OPEN PAIRS..... 2:30 P.M.

SATURDAY, SEPTEMBER 24

STRATIFIED OPEN PAIRS..... 10:00 A.M.
STRATIFIED 299er PAIRS..... 2:30 P.M.
STRATIFIED OPEN PAIRS..... 2:30 P.M.

SUNDAY, SEPTEMBER 25

BRACKETED SWISS TEAMS
FIRST SESSION BEGINS AT 10:30 A.M.

STRATIFIED EVENTS

A= 2000+ B= 750-2000 C= 0 TO 750

STRATIFICATION OF 299'er EVENTS
AT THE DISCRETION OF THE DIRECTOR IN CHARGE

FOR PARTNERSHIPS PLEASE CALL:

LOUISE REMLEY 610-478-9354 (Home) or (cell) 610-207-3294

louiseremley@msn.com

***PARTNERSHIPS GUARANTEED UNTIL 30 MINUTES BEFORE
GAME TIME***

****PARTNERSHIPS NOT GUARANTEED FOR SWISS****

**THE INN AT READING AMMENITIES INCLUDE
EASY ACCESS, FREE PARKING, DISCOUNTS FOR ROOM AND
FOOD (FOOD WILL BE AVAILABLE BETWEEN SESSIONS).
**NO FOOD MAY BE BROUGHT INTO THE
HOTEL****

September 23 - 25

HAGERSTOWN, MD SECTIONAL

SEPTEMBER 23-25, 2011

WILLIAMSPORT AMERICAN LEGION
WILLIAMSPORT, MD

Directions: The Williamsport American Legion is located approx. ½ mile from Maryland exit 1 off I-81. Take exit 1, turn toward Williamsport. American Legion will be approx. ½ mile on the left (Red, White, and Blue street sign – American Legion Dr.) across from the Williamsport Fire Hall. From points east & west, take I-70 to I-81 South. Exit 1 is approx. 2 miles south of I-70. From points north & south, take I-81 to Maryland exit 1.

FRIDAY SEPTEMBER 23

Stratified Pairs (1000/2000/2000+).....	12:00 p.m.
Stratified 499er Pairs (100/300/500).....	12:00 p.m.
Bridge Lecture.....	5:15 p.m.
Stratified Pairs (1000/2000/2000+).....	6:00 p.m.
Stratified 499er Pairs (100/300/500).....	6:00 p.m.

SATURDAY SEPTEMBER 24

Note morning / afternoon start times for Saturday

Stratified Pairs (1000/2000/2000+).....	10:00 a.m.
Stratified 499er Pairs (100/300/500).....	10:00 a.m.
Bridge Lecture.....	2:45 p.m.
Stratified Pairs (1000/2000/2000+).....	3:30 p.m.
Stratified 499er Pairs (100/300/500).....	3:30 p.m.

SUNDAY SEPTEMBER 25

*****NOTE***: Swiss teams will be stratified by team average
except 749er strat cannot have any player over 750 masterpoints**

Stratified Swiss Teams (1250/2000/2000+).....	11:00 a.m.
Stratified 749er Swiss Teams (200/500/750).....	11:00 a.m.

Sunday Swiss is two session play through finishing @ approx. 6:15 p.m.

\$9 /ea / session - \$112 per 4-person team Sunday includes
hot meal provided by American Legion @ approx. 3:00 p.m.

Anyone having special meal needs (vegetarian, etc.) see Ronnie @ 11:00 a.m.

\$1 additional per session for non-ACBL / unpaid ACBL members

Co-chairs: Ronnie Orr (304) 279-0013 & Tim Smith (304) 279-4872

Holiday Inn Express 301-745-5644 & Country Inn & Suites 301-582-5003 @exit 5
Courtyard by Marriott 301-582-0043, SpringHill Suites 301-582-0011 @exit 5
Hampton Inn 240-420-1970 @ exit 9, Homewood Suites 301-665-3816 @exit 5
NON-SMOKING TOURNAMENT WITH HOSPITALITY BREAKS

September 24

199'ers

please join us at the

UNIT 112 199'er FALL SECTIONAL

Saturday September 24, 2011

Potter Place, Fairport NY

Sanction # SN1109038

Two sessions at 10:00 a.m. & 2:00 p.m.

Only those players with less than 200 masterpoints are eligible to play in these games.

These games will be stratified

A chance to win silver points playing against people with your own level of experience

Much cheaper than an open sectional tournament

Fees: \$7.00/session

CHAIRPERSON: MARK MC DERMOTT (315-559-9748)

Which is the largest? (A) the number of legal bridge auctions, (B) the number of bridge deals, or (C) the number of feet to the nearest star.



Answer

(A) The number of possible bridge auctions is almost beyond comprehension, a 48-digit number! The number of possible bridge deals is in the octillions, a 29-digit number. To put these into perspective, consider that the number of feet to the nearest star is only an 18-digit number.

Sept 30 - Oct 2

Northeast Pennsylvania Bridge Association Fall Sectional Tournament

Sep. 30 to Oct. 2 2011
Independent Fire Company,
166 S Sprague Avenue - Kingston, Pa
(Wilkes-Barre)

Driving instructions From Route
I-81: Take exit 170 (Rt 309);
Take rt 309 to exit 4; Turn left
on Rutter Avenue; Take Rutter
to Pierce Street (Rutter becomes
a one-way the other way) Turn
right on Pierce Street Drive to
the end of Pierce Street (two
blocks). Make a left turn on
Wyoming Avenue (rt 11) Drive
to Kingston
Corners (intersection of Market
Street and Wyoming
Avenue) Turn right on to Market
Street and watch for Sprague
Ave. on the left.
From Rt 11:
Drive to Market Street in
Kingston and turn west to
Sprague Avenue on the
left Excellent refreshments will
be served at each session
Continental breakfast (pastry
and coffee) Saturday and
Sunday mornings.
Box lunches sold for between
sessions on Sunday



Stratification subject to
appropriate changes by the
director.

Friday, Sep. 30, 2011

1:30 PM - Stratified Pairs
(0-500) (500-1000) (1000+)

I/N 199er 99er 49er

7:00 PM - Stratified Pairs
(0-500) (500-1000) (1000+)

I/N 199er 99er 49er

PLEASE NOTE TIME
CHANGES FOR SATURDAY
Saturday, Oct. 1, 2011

10:00 AM Stratified Pairs
(0-500) (500-1000) (1000+)

I/N 199er 99er 49er

3:00 PM - Stratified Open Pairs
(0-500) (500-1000) (1000+)

I/N 199er 99er 49er

Sunday, Oct. 2, 2011

Stratified Swiss Teams

11:00 AM & TBA

(0-500) (500-1000) (1000+)

Swiss Teams stratification based
on average masterpoints of each
team.



Fees: \$8.00 per person, per session. \$9.00 per person for nonmembers & unpaid ACBL members
GREAT SNACKS AND HOSPITALITY

Tournament Chairperson: Ray Depew
Partnerships: JoAnn Mauer
(570) 620-2638 mauer@ptd.net

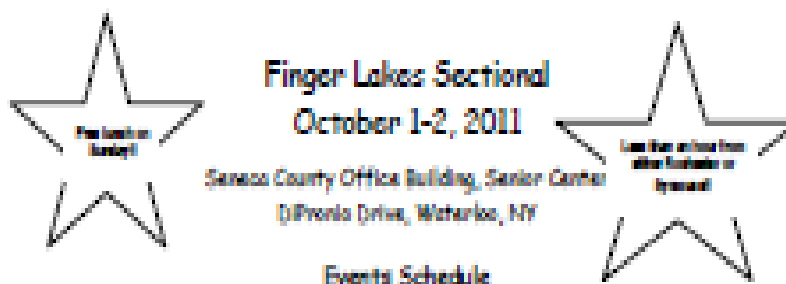


VISIT US ON OUR WEB SITES AT:

www.nepab.com
AND AT
bridgelady.net



October 1-2



Sat. 11:00am 299er Pairs (Stratified: 200-300; 100-200; 0-100)

Open Pairs 2 session event (Stratified 1500+; 300-1500; 0-300)

Sat. 3:30pm 299er Pairs (Stratified: 200-300; 100-200; 0-100)

Continuation of Open Pairs

Sun. 11:00 am Stratified Swiss teams (stratifications based on average team masterpoints: A-1500+; B-300-1500; C-0-300). There will be a short dinner break with refreshments provided at NO COST!!

***As long as there at least 3 tables, we will also hold a separate 299er Swiss Team

Directions: NYS Thruway (Exit 41(Waterloo exit); go 4 miles south on Route 414, turn right on North Road, go 3/10 mile and turn left on Difronio Drive. (Note - If you get to Route 5620, you passed North Road)

Lodging: Holiday Inn, 2468 Route 414, Waterloo (315) 539-5011; Microtel Inn and Suites, 1966 Routes 5 & 20, Seneca Falls (315) 539-8438 (both hotels are within one mile of the playing site)

Information & Partnerships: Mary Miller (585) 394-7899
mmiller028@rochester.rr.com or Walt Gable (315) 568-2538

October 14-16



PCBA

FALL SECTIONAL TOURNAMENT

OCTOBER 14-16, 2011

FIREMAN'S MEMORIAL HALL

36 West Elm Street
Conshohocken, PA 19428

PLAYING SITE TELEPHONE NO. (610) 828-4293

FRIDAY, OCTOBER 14

10:00 AM STRATIFIED PAIRS ♦ STRATIFIED 299er PAIRS
Single session events—stratified by the average masterpoints of both players
FREE PIZZA LUNCH

2:30 PM STRATIFIED PAIRS ♦ STRATIFIED 299er PAIRS
6:00 PM WINE AND HORS D'OEUVRES

7:00 PM STRATIFIED PAIRS ♦ JANE SEGAL PRO-AM
Single session events—stratified by the average masterpoints of both players

SATURDAY, OCTOBER 15

10:00 AM STRATIFIED PAIRS ♦ STRATIFIED 299er PAIRS
FREE SANDWICHES

2:30 PM STRATIFIED PAIRS ♦ STRATIFIED 299er PAIRS
Single session events—stratified by the average masterpoints of both players

SUNDAY, OCTOBER 16

9:00 AM FREE BAGEL BRUNCH

10:00 AM STRATIFIED SWISS TEAMS
(play through with lunch served)

10:00 AM STRATIFIED 299er PAIRS - single session

2:30 PM STRATIFIED 299er PAIRS - single session

FREE BREAKFAST
FREE PIZZA LUNCH
WINE AND
HORS D'OEUVRES
BEFORE THE 7:00 GAME

JANE SEGAL PRO-AM
OPEN TO ANY PLAYER WITH
LESS THAN 500 MP's
PRE-REGISTRATION REQUIRED
JOBFLOWERS@COMCAST.NET

FREE BREAKFAST
FREE SANDWICHES AT
LUNCH
SNACKS SERVED ALL DAY

FREE BAGEL BRUNCH
FREE LUNCH

\$24.00 per pair per session Strats may be combined based on attendance

STRATIFIED A = 2000+ B = 750—2000 C = 0—750 ♦ 299er A = 200—300 B = 50—200 C = 0—50

Tournament Chairman: *Meyer Kotkin* guymath@comcast.net (856) 424-8149
Partnerships: *Tom Purl* tpurl@hotmail.com (610) 518-6790 *Jerry Craig* antiqua1@comcast.net (609) 965-2275

Directions and Parking

I-76 West: From I-76 West, take exit 332 (PA-23/Conshohocken) and merge onto Matsonford Rd. Stay straight to Fayette St. Follow Fayette St. for approximately .3 miles and make a left on W. Elm St. Make your first right on Forrest St. and the hall is located on your right.









I-76 East: From I-76 East, take the I-476/PA-23 exit and follow signs for PA-23/Conshohocken. Make a right on Matsonford Rd. and stay straight to Fayette St. Make your first right on Forrest St. and the hall is located on your right.

I-476 South: Follow I-476 South to the I-76 exit (Philadelphia/PA-23/Conshohocken). Be sure to stay in your right lane and follow signs for PA-23/Conshohocken. Make a right on Matsonford Rd. and stay straight to Fayette St. Follow Fayette St. for approximately .3 miles and make a left on W. Elm St. Make your first right on Forrest St. and the hall is located on your right.

I-476 North: Follow I-476 North to the I-76 exit (Philadelphia/PA-23/Conshohocken). Keep left at the fork in the ramp, following signs for PA-23/Conshohocken. Then keep right at the fork to go on to Matsonford Rd. Make a right on Matsonford Rd. and stay straight to Fayette St. Follow Fayette St. for approximately .3 miles and make a left on W. Elm St. Make your first right on Forrest St. and the hall is located on your right.

Parking can be found in the parking garage at the top of the hill at the intersection of Forrest St. and Hector St.

October 21-23

LEHIGH VALLEY UNIT 133 SECTIONAL + ACBL DISTRICT 4 NAP Flight-A	
October 21-23, 2011	
SCHEDULE <u>Friday October 21</u> 1:00 pm & 6:30 pm Stratified Open Pairs NLM<500 Pairs* (1:00 only) Single Sessions <u>Saturday October 22</u> 10:30 am & 3:30 pm Stratified Open Pairs NLM<500 Pairs* (10:30 only) Single Sessions 10:30 am & 3:30 pm NAP Flight A 2-session Qualifier (must have club or unit qualification) <u>Sunday October 23</u> 10:30am-tbd Stratified Swiss Teams 2 sessions NLM<500 Swiss Teams 1 session (10:30) NAP Flight A 2-session Final There will be a short break for lunch on your own on Sunday (no arranged lunch on-site). Free coffee/snacks throughout Stats: A=2000+, B=750-2000 C=0-750 (NLM 100, 300,+) if separate NLM game If no separate NLM game, then A=2000+, B=500-2000, C=0-500 NLM Games marked * will be merged into the Stratified Open Events if fewer than 5 tables. NLM<500 is Non-Life Master less than 500MP. Stratification within Sectional, not NAF, events will be done on average masterpoints.	<div>     </div> WEST END YOUTH CENTER 848 N. 20 th Street Allentown, PA This site is Handicap Accessible From RT 22: Exit Cedar Crest to the south. Proceed 1/4 mile and turn left on Tilghman St. Go 1 mile and turn left on 20 th street. Go 2 blocks to site. From I-78/309: exit East on route 22. Proceed as above. From PA Turnpike (476): take Allentown - Lehigh Valley exit go East on Rt. 22. Proceed as above. <div>     </div> Tournament Director: Marc Labovitz Partnerships: John Schwartz 610-391-0261 or jschwartz1@enter.net Partners guaranteed for sectional events! Tournament Chairperson: Rene Rodriguez Jr. tel. 610-395-6504 Tournament Recorder: Donald Swan tel. 610-838-9277

October 22-23



Rochester Fall Sectional

October 22-23, 2011

Knights of Columbus
70 Barrett Drive
Webster, NY

Entry Fees: ACBL Members:
\$9.00 per session
Non/unpaid members: \$10/session
\$4.00 discount for students
under age 25

DIRECTIONS: From Rochester: Take 490E to 590N to Rt-104E towards Webster. Exit at Holt Rd, traveling across Holt onto service road to Barrett Drive on the right. If you come to North Avenue (Rt. 250), you went too far. If you do, turn right on 250, turn right on Main Street, turn right on Barrett Drive.
From NYS Thruway (East of Rochester): NYS Thruway Exit 45 to 490E to 590N to Rt-104E towards Webster. Continue as above.
From the South and NYS Thruway (West of Rochester): NYS Thruway Exit 46 to 390N to 490E to 590N to Rt-104E towards Webster. Continue as above.
From the East (North of Thruway): Take 104W to Webster, exit at North Avenue (Rt. 250). Turn left to Main Street and make a right. Go about 1/3 mile and turn right onto Barrett Drive.

SATURDAY, OCTOBER 22

11:00 AM STRATIFIED OPEN PAIRS
(Two Sessions)

STRATIFIED 299er PAIRS
(Choose One or Two Sessions)

FREE One Session: Newplicate 0-5 MP

First time duplicate players can come early (10:30 am) to learn procedures and protocol.

3:30 PM STRATIFIED OPEN PAIRS

STRATIFIED 299er PAIRS

SUNDAY, OCTOBER 23

11:00 AM STRATIFIED OPEN Swiss Teams
(Two Session Play-through)

STRATIFIED 299er Swiss Teams
(One Session)

LUNCH AVAILABLE FOR PURCHASE ON SUNDAY

Tournament Chairperson
MARY LOU LAWSON
585-265-3718
bridgeteacher@frontiernet.net

Partnership Chairperson
Charlie Adrion
585-319-0600
cadrion@rochester.rr.com

	Open	299er
A:	1500+	100-300
B:	500-1500	50-100
C:	0-500	0-50

October 29-30

UNIT 112 Binghamton SECTIONAL Endwell, NEW YORK

OCTOBER 29 & 30, 2011

Saturday and Sunday ENDWELL FIRE STATION

DIRECTIONS to the ENDWELL FIRE STATION:

FROM THE WEST: on Route 17, take Exit 67 N (Endicott) to Rt. 26 N. Take ramp to Rt. 17C East (toward Endwell). 1.5 miles take Hooper Rd. exit. 0.8 miles (3rd traffic light) turn left on Country Club Rd. Fire Station on left. Parking and entrance at rear of Fire Station.

FROM THE EAST: on Route 17: Take Exit 69 (Endwell). 1.4 Miles take ramp to Hooper Rd, 0.6 miles (3rd traffic light) turn left on Country Club Rd. Fire Station on left. Parking and entrance at rear of Fire Station.

SATURDAY, Oct 29, 11:00AM and Stratified Open PAIRS
Two single sessions 4:00 PM Unlimited/750/300

Stratified 299er Pairs
300/200/100 – to be set by the director

SUNDAY, Oct 30 11:00 AM **OPEN SWISS TEAMS, 2 sessions**
Stratified by team average
Unlimited/750/300
299er Swiss Teams, 2 sessions **

Entry fees per person per session: \$9 for ACBL members
\$10 for non or unpaid ACBL members
\$5 for students (with student ID)

** There will be local sign ups for the 299er event.
Call (607) 770-6772 to sign up for these games if you are not local.

PARTNERSHIPS and Co-CHAIRS:
Ellen Keller (607) 770-6772 (ekeller1@stny.rr.com)
Eileen Schuchman (eschuchman@stny.rr.com)

Upcoming District 4 Events

DATE	TOURNAMENT	LOCATION	PAGE
Sept 9-11	PCBA Summer Unit 141	Westhampton NJ	36
Sept 16-17	Susquehanna Unit 217	Williamsport PA	37
Sept 16-18	Syracuse Fall Unit 112	Cicero NY	38
Sept 16-18	Diamond State Unit 190	Wilmington DE	39
Sept 23-25	Hagerstown Unit 168	Hagerstown MD	40
Sept 23-25	BMBU Fall Unit 121	Wyomissing PA	41
Sept 24	199er Fall Unit 112	Fairport NY	42
Sept 30 - Oct 2	Unit 120	Kingston PA	43
Oct 1-2	Finger Lakes Unit 112	Waterloo NY	44
Oct 14-16	PCBA Fall Unit 141	Conshohocken PA	45
Oct 21-23	Lehigh Valley Fall Unit 133	Allentown PA	46
Oct 22-23	Rochester Fall Unit 112	Webster NY	47
OCT 22	NAP C	Clubs	30
OCT 22-23	NAP A	Allentown PA	30 & 45
OCT 29	NAP B	Wilmington DE	30
Oct 29-30	Binghamton Unit 112	Endwell, NY	48
OCT 31 - NOV 6	RED ROSE REGIONAL	LANCASTER PA	22-24